



A World of Learners; where children gain a passport to the world.

## School Handbook 2018-2019

Compiled and created by the BHIS PTA



### School Pledge

At Beacon Hill International School,  
I am becoming a global citizen.  
I know how to be safe.  
I am kind to myself and others.  
I am responsible.  
I am a world scholar.

Beacon Hill International School, 2025 14th Ave S, Seattle, WA 98144  
Main Office: 206-252-2700  
Attendance Desk: 206-252-2704

## Table of Contents

<b>Beacon Hill International School Mission &amp; Vision</b>	<b>3</b>
School Spirit and expectations	3
<b>About Our Building</b>	<b>4</b>
Building Map	5
<b>School Administration and Support Staff</b>	<b>6</b>
<b>Teacher Directory</b>	<b>7</b>
English Reading and Writing Teachers	7
Language Immersion Teachers	8
PCP Teachers	8
<b>How to Stay Informed</b>	<b>9</b>
<b>Our School Policies</b>	<b>9</b>
Uniform	9
Lost & Found	9
Tardiness/Absences	9
Homework Policy	10
Getting to and from school	11
Schedule	11
Start of School Day - 7:55 a.m.	11
End of school Day - 2:25 p.m. (1:10 p.m. every Wednesday)	11
Breakfast and Lunch - Schedule, Menu, How to Purchase Meals	11
Before and After School Care	
Shelter in place vs Lockdown	
<b>Volunteering at BHIS</b>	<b>14</b>
Getting Started as a Volunteer	14
Volunteer Opportunities	15
<b>2018-19 School Calendar</b>	<b>15</b>
<b>BHIS Parent Teacher Association (PTA)</b>	<b>16</b>



## Beacon Hill International School Mission & Vision

Welcome to Beacon Hill International School! BHIS provides an inclusive, globally-oriented education and offers three language options: Spanish immersion, Mandarin immersion, and all-day English.

What makes BHIS an international school?

- Language immersion
- Families and students with backgrounds from around the world
- ELL (English Language Learners): We are proud to have the highest population of ELL students in the district. We know that being bilingual is an asset that builds strong academics and community.
- Guest teacher program with teachers coming from China, Spain, and South America.
- At BHIS, literacy and writing are taught in English. Math, science, and integrated literacy are taught in Mandarin/Spanish/English depending on what program your child is in.

## School Spirit and expectations

BHIS behavior expectations: Our staff uses Positive Behavior Interventions and Supports (PBIS), an evidence-based framework for developing positive behavior and creating a climate helpful for learning. We focus on our three school wide expectations: **I am Safe, I am Kind, and I am Responsible**. We nurture students' abilities to solve conflicts and repair relationships through conflict resolutions.

### How do you know if it's:

**Rude:** When someone does or says something hurtful but not on purpose.

**Mean:** When someone does or says something hurtful on purpose once or twice.

**Bullying:** When someone does or says something hurtful on purpose over and over again, and you can't make it stop.

## About Our Building

**Open Concept:** The school building was designed in the Open Concept method that fosters teacher collaboration and cross-age instruction. Classrooms are grouped into Pods, and there are few walls and doors in the building. Students and teachers work hard to keep noise disruptions to a minimum, and follow these hallway and classroom guidelines:

- Level 1 silence
- Level 2 whisper
- Level 3 group work
- Level 4 outside voice
- Level 5 emergency voice

**Pods:** Classrooms are grouped into clusters, or Pods. Students typically move from their “homeroom” morning pod to their afternoon pod before lunch.

K Pod - Kindergarten & K/1 Mandarin Immersion

A Pod - 1st Grade & K/1 Spanish Immersion

B Pod - 2nd Grade/3rd Grade

C Pod - 4th Grade/5th Grade & 4th/5th Grade Spanish and Mandarin Immersion

D Pod - 4th Grade/5th Grade

E Pod - 2nd Grade/3rd Grade & 2nd/3rd Grade Spanish and Mandarin Immersion

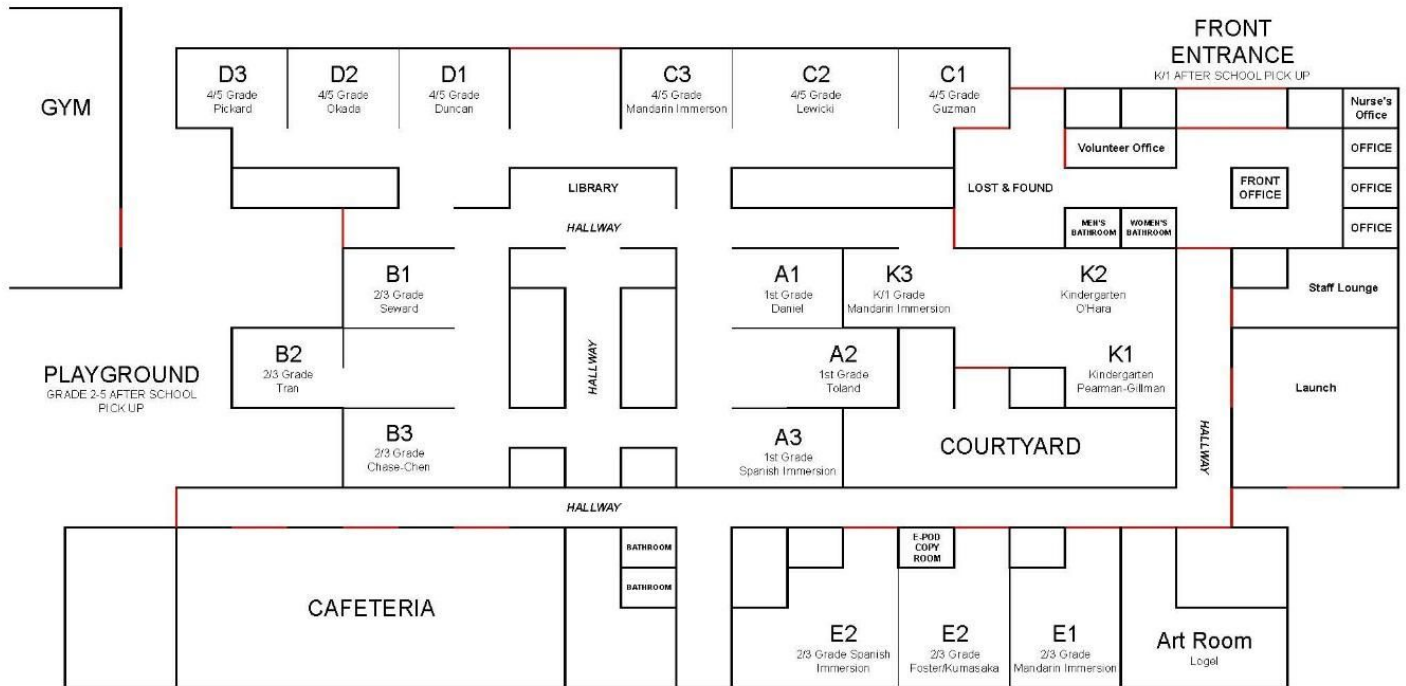
**Building Security:** We all want to provide our students with safe learning environments. Our building is locked during the school day.

- All school doors remain locked during school hours 8:00 a.m. - 2:25 p.m.
- All visitors, please enter through the front door at the main office.
- Staff and students are NOT allowed to open doors for visitors.

To enter the school building:

- Ring the bell located to the right of the front doors on 14th Ave. South.
- While facing the bell, identify yourself to the front desk staff.
- Sign in at the front office and wear a visitor sticker or badge if you are going to stay in the building.
- Sign out when you leave.
- Please do not ask students or teachers to let you in through other doors of the building. It is against school policy.

## Building Map



For a printable version follow this link.

[https://drive.google.com/file/d/0B3RozROhG\\_JDQjF4UHY0N0N4ZmIHTjZPTXM3VUJvN0RPQW9z/view?usp=sharing](https://drive.google.com/file/d/0B3RozROhG_JDQjF4UHY0N0N4ZmIHTjZPTXM3VUJvN0RPQW9z/view?usp=sharing)

## School Administration and Support Staff



**Principal:** Katie Virga - [KAVirga@seattleschools.org](mailto:KAVirga@seattleschools.org)

Ms. Katie became the principal of BHIS in 2016, having begun her teaching career in Seattle and her principal career in Oakland, California. She is committed to developing and supporting a strong staff, to getting every BHIS student the opportunities needed to learn, and to building a vibrant school community.



**Assistant Principal:** Christina Cartwright - [cpcartwright@seattleschools.org](mailto:cpcartwright@seattleschools.org)

Ms. Tin came to BHIS as the assistant principal in 2017 from Highline Public Schools. She brings a wealth of experience in teacher coaching and equity in education to our school. She is also a parent at BHIS; two of her three young children attend our school!

## School Staff



Cheryl Nitta



Diana Furuta

**Front Desk:** Ms. Cheryl and Ms. Diana help our school operate smoothly every day. They track attendance, supplies, security, communication, sick students, and so much more.



**School Nurse:** Jenny Osborne - [josborne@seattleschools.org](mailto:josborne@seattleschools.org). The school nurse is at school only on Mondays, Tuesdays and some Wednesdays.

**Odessa Brown Nurse:** At school 1 day a week. If you want your child to be able to be seen/attended to by Odessa Brown nurse on this day, you must sign and return the form for Odessa Brown included in the back to school packet.

If a nurse is not present, the front desk staff will assess your student and will call parents if needed.



**Family Support Worker:** Juan Carlos Torres - [jctorres@seattleschools.org](mailto:jctorres@seattleschools.org)



**Volunteer and Social Emotional Learning Coordinator:** Romelle Bradford - [rlbradford@seattleschools.org](mailto:rlbradford@seattleschools.org)





**School Counselor:** Elizabeth Swarny, M.Ed. - (206) 252-2689 or [esswarny@seattleschools.org](mailto:esswarny@seattleschools.org) - Ms. Elizabeth is specially trained in child development, learning strategies, and teaching self-management and social skills. She works with parents, teachers, and students to identify and address students' developmental and social-emotional needs. She also teaches in classrooms about topics such as test anxiety, bullying, managing feelings, problem-solving, sexual abuse, and more. If you have social-emotional or academic concerns or questions about your student, please reach out to Ms. Elizabeth.



**Lunchroom Manager:** Tuyet Dao - [tndao1@seattleschools.org](mailto:tndao1@seattleschools.org) - You can find Tuyet in the cafeteria before and during school.

## Teacher Directory

### English Reading and Writing Teachers

#### Kindergarten

Alex Pearman-Gillman - [alpearman@seattleschools.org](mailto:alpearman@seattleschools.org)

Jimmie O'Hara - [jrohara@seattleschools.org](mailto:jrohara@seattleschools.org)

#### 1st Grade

Nisha Daniel - [nmdaniel@seattleschools.org](mailto:nmdaniel@seattleschools.org)

Kelly Toland - [hktoland@seattleschools.org](mailto:hktoland@seattleschools.org)

#### 2nd/3rd Grade

Minh Tran - [mktran@seattleschools.org](mailto:mktran@seattleschools.org)

Meg Seward - [mdseward@seattleschools.org](mailto:mdseward@seattleschools.org)

Rebecca Chase-Chen - [rcchasechen@seattleschools.org](mailto:rcchasechen@seattleschools.org)

#### 4th/5th Grade

Ashley Duncan - [adduncan@seattleschools.org](mailto:adduncan@seattleschools.org)

Andy Pickard - [acpickard@seattleschools.org](mailto:acpickard@seattleschools.org)

Kyle Okada - [kyokada@seattleschools.org](mailto:kyokada@seattleschools.org)



## **English Math Teachers**

### **1st Grade**

Kelly Toland - [hktoland@seattleschools.org](mailto:hktoland@seattleschools.org)

### **2nd Grade**

Therese Kumasaka - [tdkumasaka@seattleschools.org](mailto:tdkumasaka@seattleschools.org)

### **3rd Grade**

Shannon Foster - [slfoster@seattleschools.org](mailto:slfoster@seattleschools.org)

### **4th/5th Grade**

Trisha Lewicki - [pjlewicki@seattleschools.org](mailto:pjlewicki@seattleschools.org)

## **Language Immersion Teachers**

### **Kindergarten and 1st Grade**

Jenn Hung - [cjhung@seattleschools.org](mailto:cjhung@seattleschools.org)

Susana Balasch Sellart - [subalaschsel@seattleschools.org](mailto:subalaschsel@seattleschools.org)

### **2nd Grade and 3rd Grade**

Ying Ying Wu - [yiwu@seattleschools.org](mailto:yiwu@seattleschools.org)

Guiomar Rodriguez - [ggrodriguez@seattleschools.org](mailto:ggrodriguez@seattleschools.org)

### **4th Grade and 5th Grade**

Hongbo Li - [holi@seattleschools.org](mailto:holi@seattleschools.org)

Maria Guzman - [meguzmanmuro@seattleschools.org](mailto:meguzmanmuro@seattleschools.org)

### **Guest Teachers**

BHIS has 5 guest teachers from China and Spanish-speaking countries every year. BHIS families are honored to host these teachers in their homes.

## **PCP Teachers**

**PCP** - Planning and Collaboration Period (Teacher Planning Time). At BHIS, PCP periods include **Art, Gym, Library, and Mandarin**. Students have each of these PCP classes once a week. Wednesday is the only day there is no PCP class.

Library - Mary Thompson - [mathompson@seattleschools.org](mailto:mathompson@seattleschools.org)

Art - Mary Howard Logel - [mhlogel@seattleschools.org](mailto:mhlogel@seattleschools.org)

Gym - Heather Graves - [hmgraves@seattleschools.org](mailto:hmgraves@seattleschools.org)

## How to Stay Informed

Parents are encouraged to communicate directly with their student's teachers when needed (directory on page 6). If interpretation is needed to communicate with a teacher, please contact the family support worker or front office staff.

Parents can get regular information about the school in the following ways:

- **Backpack mail:** Check your child's backpack weekly for announcements, event flyers, invitations, permission slips, etc.
- **Weekly robocalls:** Every Friday afternoon the principal will issue a recorded phone call with important information for families. These calls are provided in English, Spanish and Cantonese. Please let the front office know if you want to get the robocalls in a different language.
- **PTA website:** Bookmark [beaconhillpta.org](http://beaconhillpta.org) for an up-to-date event calendar and information about our school and PTA
- **PTA mailing list:** Join the mailing list at [beaconhillpta.org](http://beaconhillpta.org) to receive emailed newsletters and updates.
- **BHIS PTA Facebook page:** Go to <https://www.facebook.com/BHISPTA/> and "Like" the page to get reminders, updates, and community information.
- **The Source:** Parents can access their students' attendance and assessment scores through Seattle Public Schools' parent portal, The Source (<http://www.seattleschools.org/source>). It is also where you can refer your student to Advanced Learning programs.

## Our School Policies

### Uniform

- Colors: Tops - Navy Blue, Forest Green, White; Bottoms - Navy Blue or Khaki
- Solid colors (no prints, logos, patterns), except for school logo gear.
- Acceptable: T-shirts, sweatshirts, polo shirts, hoodies, sweaters, cardigans, shorts, skirts, skorts, capris, leggings, dresses, pants, sweatpants
- Unacceptable: Jeans
- FREE DRESS DAYS are every last Friday of the month.
- Please write your child's name on their school clothes/jackets and check the Lost & Found when something goes missing.

### Lost & Found

For missing items, please check the Lost & Found outside the Volunteer Office accessible via the front entrance. Unclaimed items will be donated based on our clean out schedule: November 16, February 15, April 5, June 20.

### Tardiness/Absences

Every Student. Every Classroom. Every Day.

Attendance has been proven to be one of the most powerful predictors of academic achievement and can have a dramatic impact on key milestones.

Students are expected to be in line on the playground no later than 7:55 a.m. every day.

Reasons to keep your child at home:

- Unusually tired, pale, lack of appetite, difficult to wake, confused or irritable
- Fever of 100 F or higher
- Vomiting and/or diarrhea within the past 24 hours
- Rash, especially with itching or fever
- Sore throat or chronic cough with fever
- Lice or scabies

If your child has these symptoms and must stay home, call the attendance desk at (206) 252-2704 or email [Beaconhill.Attendance@Seattleschools.org](mailto:Beaconhill.Attendance@Seattleschools.org).

Notify the front office or your child's teacher if they are not feeling well, but not displaying the above symptoms. The school will monitor your child at school and call you if anything changes and if your child needs to go home.

**Doctor's Appointments:** Please call the attendance desk at (206) 252-2704 or email [Beaconhill.Attendance@Seattleschools.org](mailto:Beaconhill.Attendance@Seattleschools.org) in advance about any appointments that will happen during the school day. On the day of the appointment, please check in at the front desk and sign your child out. Your child will be sent to the front office to meet you.

### **Other Absences**

If the absence is planned, call (206) 252-2704 or email [Beaconhill.Attendance@Seattleschools.org](mailto:Beaconhill.Attendance@Seattleschools.org) at least three (3) days in advance. If the absence is unplanned, let the school know as soon as you are able.

Be sure to check with your child's teachers and get assignments and classwork in advance (if you are able) or after your child has returned so they can stay on track with classmates.

Families are encouraged to not schedule appointments, vacations, or other events at times that would cause students to be absent from school.

### **Homework Policy**

The homework policy is different for each grade and subject to our dual language program. While some programs will assign more homework, the general guidelines are as follows:

- Grades K/1: Read 15-30 minutes, and 5 to 10 minutes of writing, language, or math homework.
- Grades 2/3: Read 30 minutes and 20 minutes of writing, language, or math homework.
- Grades 4/5: Read at least 30 minutes, complete a weekly writing assignment, 20 minutes of math - this will either be finishing a classwork assignment, or completing an extra practice worksheet. If a student is struggling with the work, or taking longer than 20 minutes, a parent can write a note saying the student needs extra help at school, and the student does not need to continue working on the assignment.

Along with math, students in the Mandarin or Spanish program should expect extra language practice on a weekly basis. Science work is almost always in-class, experientially based, and so

students will rarely have science work to do outside of class. In addition, most weeks we assign writing homework.

A note on reading homework: This can be a combination of your child reading to you, reading with you, listening to an audio book, or you reading to your child in your home language, English, or target immersion language.

## **Getting to and from school**

Walking and biking are encouraged!

We do not have a parking lot, and traffic on 14th Ave South is heavy. Auto congestion on 13th Ave. South in the morning is confusing and dangerous for our students arriving on foot. People driving students in the morning should proceed to 14th Ave S for drop-off or, better yet, park 2-3 blocks away and walk with your student to school. Please use crosswalks!

## **Schedule**

School Hours: 7:55 a.m. - 2:25 p.m.

Early Release every Wednesday at 1:10 p.m.

Breakfast/supervised playground time starts at 7:35 a.m.

***\*Please do not drop your child(ren) off unattended before 7:35 a.m.***

### **Start of School Day - 7:55 a.m.**

All students line up for their morning class on the school playground, rain or shine. Each class has a specific spot. Teachers will come out and lead each class into the building promptly at 7:55 a.m. Supervision on the playground and in the cafeteria begins at 7:35 a.m. each day. Please do not drop your child(ren) off unattended before 7:35 a.m.

### **End of school Day - 2:25 p.m. (1:10 p.m. every Wednesday)**

K/1: Pick up your Kindergartener or 1st Grader in class. Please wait for the door to be unlocked and enter through the front entrance and exit through the playground.

2-5: Pick up your 2nd-5th Grader on the school playground after school.

If you are more than 10 minutes late, your child will be waiting in the front office for you.

**Tip:** Get contact info of other parents who would be able to pick up and wait with your child until you arrive.

## **Breakfast and Lunch - Schedule, Menu, How to Purchase Meals**

**Breakfast Schedule** - 7:35 - 7:55 a.m.

### **Lunch Schedule**

- Kindergarten/1st Grade - 10:45 a.m. Lunch
- 2nd/3rd Grade - 11:15 a.m. Lunch
- 4th/5th Grade - 11:45 a.m. Lunch

## School Menu

Visit the SPS Nutrislice interactive menu (<http://seattleschools.nutrislice.com/>) to see upcoming lunch offerings. This website provides menu descriptions, nutritional facts and other useful information. Additionally, students and families may download a free smartphone app from this website to conveniently view menus and post comments on menu items.

## Purchasing School Meals

Students can pay cash daily or you can prepay for school meals by depositing funds to their meal account. Students access their meal account using their 4-digit PIN number, which will come home with them during the first week of school. Please help your child memorize their 4-digit PIN.

## School Meal Prices:

Breakfast: \$2.00

**Coming Soon:** Thanks to a partnership with the school district and United Way of King County ALL students will be able to eat breakfast for FREE at school. Breakfast is important to learning! BHIS allows students to grab breakfast and eat in class. Students must enter their PIN in order to receive their FREE breakfast.

Lunch: \$3.00

(no charge for Reduced price meals)

## Qualify for Free or Reduced Price Meals

Your child may qualify to receive meals free of charge. If you believe your family is eligible, applications can be submitted at any time throughout the school year.

<https://www.seattleschools.org/cms/One.aspx?portalId=627&pageId=18853>

**\*PLEASE FILL OUT THE FREE AND REDUCED LUNCH FORM EVEN IF YOU DON'T NEED IT\***

The school district determines funding and class sizes based on the submitted forms.

## Three Ways to Pre-pay for School Meals

Prepayment for meals and single purchases, such as milk, is highly encouraged.

1. Preferred method: Enroll in our online prepayment service at PayPams (<https://paypams.com/HomePage.aspx>). Note: PayPams require a Student ID number or meal account PIN number. The Student ID number can be found on report cards or by accessing The Source (<https://ps.seattleschools.org/public/>). PayPams charges users a payment transaction of \$1.95 per student for each transaction.
2. Hand deliver a cash or check payment to our BHIS lunchroom manager, Ms. Tuyet Dao, to be deposited to the student's account. Make checks payable to **Nutrition Services**.
3. Mail a check payment made payable to **Nutrition Services** to the school. To ensure the money is deposited to the correct account, be sure to write your student's first and last name and ID/PIN number in the memo line on the check.

Nutrition Services will make every effort to notify the parent/guardian when a student's meal account balance is low, but it is the responsibility of the parent or guardian to monitor the student's account balance and ensure funds are available by prepaying for school meals or sending a cash payment with their student. PayPams allows convenient access to monitor account balances and meal activity. You can also find out your child's meal balance information from the BHIS lunchroom

manager or by contacting Nutrition Services ([nutritionservices@seattleschools.org](mailto:nutritionservices@seattleschools.org), 206-252-0675, Office Hours M-F: 7 a.m. - 3:30 p.m.).

## **Before and After School Care**

### **Launch**

Before and after-school care at BHIS is provided by Launch. Space is limited. Prices vary, depending on which options you choose. If your child is enrolled in Launch, your child's teacher will escort your child to Launch at the end of every school day. The entrance to Launch is located on the southwest (Hill Street) side of the building. <http://www.launchlearning.org/locations/beacon-hill/>

Other child care options include Jefferson Park Community Center, El Centro de la Raza, and the Boys and Girls Club.

### **After School Activities**

Our school is busy, all the time. We have various after-school activities for low or no cost throughout the year, including enrichment classes, homework help for invited students, and after school sports. More information about these programs will come home in your child's backpack throughout the school year.

Shelter in Place VS. Lockdown

## **Volunteering at BHIS**

We love our BHIS volunteers! Volunteers provide critical support and mentorship to students and teachers. To begin volunteering at school, you must complete the school district's requirements, as listed below:

### **Getting Started as a Volunteer**

**STEP 1:** Complete the Volunteer Application Packet (4 Pages) once a year. This is included in back-to-school packet or you can apply online through the school district's new paperless volunteer application ([http://www.seattleschools.org/families\\_communities/volunteer](http://www.seattleschools.org/families_communities/volunteer)). Online application will only need to be filled out once and then can be renewed the following years.

**STEP 2:** View the 17-minute Adult Sexual Misconduct Prevention video. If you have already viewed the video, you do not need to view it again. Please make a note on your Volunteer Application Packet that you have already completed the video.

**STEP 3:** Turn in your application to the school or submit the online application.

**STEP 4:** Background Check. The school will confirm your identity using a photo ID and run a background check every year. You will be notified when you are cleared to volunteer.

(See [http://www.seattleschools.org/families\\_communities/volunteer](http://www.seattleschools.org/families_communities/volunteer) for more information.)

### **Volunteer Opportunities**

**School Committees** - Each of these committees has a parent representative. If you're interested in serving on a committee, please contact the principal.



- **Building leadership team (BLT) - Staffing, budget, and general building policies**
- **Culture and Climate Committee**
- **Equity Committee**

**PTA Committees** - Serving on a PTA committee is an easy way to get involved and participate in school culture.

- PTA board - meets the first week of every month, all are welcome to attend
- Family engagement committee
- Fundraising committees:
  - Rummage sale
  - Walkathon
  - Readathon
  - Beacon Bazaar

**Classroom support** - Our teachers greatly appreciate parent involvement. We encourage you to contact them directly to determine how best you can support them and their classrooms.

**Field trips** - Parent chaperones are often needed for class field trips. You must complete steps 1-4 above to be eligible to be a chaperone.

## 2018-19 School Calendar

### September:

9/5 - **First Day of School**  
9/6-9/7 - K Family/Teacher Connection Interviews  
9/7 - K/1 Family Ice Cream Social 6pm  
9/10 - **Kindergarten First Day**  
9/14 - Back to School BBQ 6-8pm  
9/24 - Deadline to apply for SPS Advanced Learning programs  
9/25 - Superintendent Juneau's Listening and Learning Tour. Location: ACRS, 3639 Martin Luther King Jr. Way S, Seattle, WA 98144. Dinner and childcare included 5:30-8pm  
9/26 - PTA Community Mtg 6:30-8:00pm

### October:

10/12 - **No School** - State In-Service Day  
10/13 - Rummage Sale  
10/18-10/19 - School Pictures  
10/18 - Superintendent Juneau's Latino/a Listening and Learning Meeting  
Location: El Centro de la Raza Centilia Cultural Center - 5:30-7:30pm  
10/19 - Grades K/2/4 Social 6-7:30pm  
10/26 - Grades 1/3/5 Social 6-7:30pm

### November:

11/1 - Read-a-Thon Assembly  
11/12 - **No School** - Veterans Day  
11/16 - Read-a-Thon  
11/16 - Fall Dance Party 6:30-8pm  
11/16 - Lost & Found Clean Out  
11/19-11/21 - Parent/Teacher Conferences  
11/19-11/23 - **No School** - Thanksgiving week

### December:

12/12 - PTA Community Mtg 6:30-8:30pm  
12/21 - 1-hour early dismissal  
12/24-1/4 - **No School** - Winter Break

## 2019

### January:

1/21 - **No School** - MLK Day of Service @ Lewis Park  
1/23 - MLK Celebration/Assembly  
1/30 - **No School** - day between semesters

### February:

2/8 - Lunar New Year Celebration 6-7:30pm  
2/15 - Lost & Found Clean Out  
2/18-2/22 - **No School** - Mid-Winter Break  
2/22 - K/1 Parents' Night

### March:

3/20 - World Water Week Assembly  
3/22 - Spring Family Dance Night  
6:30-8:00pm  
3/27 - PTA Community Mtg 6:30-8:00pm

### April:

4/8 - Lost & Found Clean Out  
4/8-4/12 - **No School** - Spring Break  
4/20 - Salmon Release @ Seward Park  
4/24 - Poem in your pocket day  
4/26 - Dia Del Nino 6-7:30pm

### May:

5/1 - Walk-a-Thon Assembly  
5/8 - Teacher Appreciation Luncheon  
5/17 - Walk-a-Thon  
5/27 - **No School** - Memorial Day  
5/29 - PTA Community Mtg 6:30-8:00pm

### June:

6/7 - Library Books Due  
6/7 - International Art Celebration and End of Year Picnic  
6/8 - Beacon Bazaar 11am-2pm  
6/19 - Global Games Day  
6/20 - 5th Grade Graduation  
6/20 - **Last Day of School** (1-hour early dismissal)  
6/20 - Lost & Found Clean Out  
6/21 - Family Fun Center 6:30-9:30pm

## **BHIS Parent Teacher Association (PTA)**

**Website:** [beaconhillpta.org](http://beaconhillpta.org) - Join our mailing list to stay informed!

**Facebook page:** <https://www.facebook.com/BHISPTA/> - "Like" our page to get reminders, updates, and community information.

The BHIS PTA is open to all interested parents and teachers who want to work together to promote the education, health, and welfare of all students and their families. We hold four community meetings a year and our board - a group of dedicated volunteers - meets monthly to strategize and organize our work to support:

- Advocacy: Education funding, racial equity in education, ELL and Special Education interests
- Community-building: Celebrations, family nights, dance parties, picnics
- Enrichment: Guest teacher program, school supplies, after-school programs, library resources

Everyone is welcome to attend PTA community meetings and board meetings to learn about our school, support our teachers, and advocate for our students. Opportunities for involvement are always available.

### **Why Join the PTA?**

- Get Informed - There's no better way to know what's happening at school.
- Tap into a Network - Meet other parents and get access to teachers and administrators.
- Speak Up - You can share ideas and concerns and more effectively drive positive changes.
- Be a Role Model - Demonstrate to your child the importance you place on education.
- Gain Appreciation - Teachers, staff, and other parents will appreciate all your help!

### **What the PTA Funds**

More than 85% of the money we fundraise goes directly back to students and families for community building and enrichment activities, such as:

- |  |  |
|--|--|
| ● Multimedia art instruction             | ● Young Authors Day                                  |
| ● Library books                          | ● Library assistant                                  |
| ● involvement                            | ● 5th grade camp                                     |
| ● science materials                      | ● Community building events                          |
| ● After School Sports instruction        | ● Chinese & Spanish instructional assistant teachers |
| ● Supply stipends for teachers and staff | ● Extra Playground Supervisor                        |
| ● PE equipment for the gym               |  |
| ● Staff appreciation day                 |  |

Our goal is to raise about \$60,000 this year. Our two main fundraisers are the fall Read-A-Thon, when students read for most of the day in their pajamas, and the spring Walk-A-Thon, a fun, high-energy event where students walk or run for 20 minutes with their classmates.

## **2018-2019 Beacon Hill PTA Fundraisers**

- School Supply Fund donations (September/October) - \$5,000 goal
- School spirit wear sales (September) - \$2,000 goal
- Rummage Sale and Goodwill Truck (October 13th) - \$1,500 goal
- **Read-A-Thon (November 16) - \$20,000 goal**
- Original Works Art (Oct-Nov.) - \$2,000 goal earmarked for art supplies
- **Walk-A-Thon (May 17) - \$20,000 goal**
- Yearbook (May) - \$1,500 goal
- Beacon Bazaar (June 8th) - \$1,000 goal
- Family Fun Center (June 20th) - \$1,000 goal
- Ultimate 5K (early July) - \$3,500 goal
- Scrip/Red Apple receipts/Box tops/Benefit mobile etc. (all year) - \$1,000 goal

## **2019-20 PTA Leadership**

President: Carolyn Feng

Secretary: Karla Sugitani

Vice President: Ivy Lim

Treasurers: Heather Hart and Stephanie Gruss

Fundraising Chair: OPEN POSITION  
Bethany Wintzcak

Communications Co-chairs: Melissa Shapiro and

Event Planning Chair: OPEN POSITION

Hospitality Chair: OPEN POSITION

Membership Chair: Peter Ehrenkranz

Pod Parent Committee Chair: Dax Bort

Readathon Chair: Karla Sugitani

Advocacy Co-chairs: Heather Hart and Jeff Magioli

Grant Writers: Peter Ehrenkranz

Guest Teacher Liaison: Kate Benward Latino Family Liaisons: OPEN POSITION